

[View this email in your browser and translate to other languages](#)



## NEW JERSEY DEPARTMENT OF HUMAN SERVICES

BUDGET NEWSLETTER | MARCH 2023

Greetings:

Governor Murphy on Tuesday unveiled a budget built on affordability, responsibility and opportunity.

We are proud to share that the Governor's proposed budget for the fiscal year that starts July 1 includes new and ongoing investments in the services and supports so important to all of us.

As we detail below, it includes continued and expanded opportunities for individuals we serve throughout Human Services, including:

- families and children
- individuals with disabilities
- older adults
- those with substance use and mental health conditions
- New Americans, and
- Individuals in need of health care, social services and other assistance.

We look forward to working with you and having additional conversations about the budget in the days ahead.

We've accomplished much together, and I look forward to accomplishing even more as we deliver on the many exciting initiatives proposed for next fiscal year.

- Commissioner Sarah Adelman

---



**AFFORDABILITY**  
**RESPONSIBILITY**  
**OPPORTUNITY**



---

**Delivering on the Promise of Affordability**

---



# EXPANDED CHILD TAX CREDIT

---

DOUBLING THE STATE  
CREDIT FOR UP TO \$1000  
PER CHILD



Building upon 18 previous tax cuts targeted toward middle and working class families, the budget delivers on the promise of affordability through historic property tax relief and initiatives important to the individuals and families we serve.

The FY2024 Budget proposes:

- Doubling the [Child Tax Credit](#), enabling families with young children to receive up to \$1,000 per child.
- Expanding the [Senior Freeze](#) property tax relief program to those with incomes up to \$150,000. That means additional property tax relief for 50,000 more older adults.



**EXPANDING SENIOR  
FREEZE PROPERTY TAX  
RELIEF PROGRAM**

---

**INCREASING INCOME  
ELIGIBILITY UP TO  
\$150,000**



---

**Home and Community-Based Services**

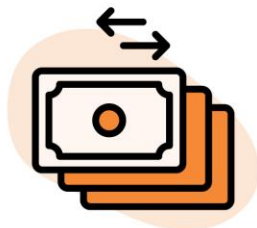
---



## Home and Community-Based Services



Workforce recruitment and retention bonuses



Loan redemption and similar programs



Certification and training programs for care workers



Translating home and community based care sector job training programs, certifications and curriculums into other languages



Housing options for those in nursing facilities and institutional settings to help transition to community

Human Services will be making \$100 million in new one-time investments in home and community-based services, including major investments in workforce development:

- Nearly \$20 million for loan redemption and similar programs for community-based care workers in fields such as behavioral health care, private duty nursing, applied behavioral analysis, and substance use disorder treatment.
- Up to \$60 million for recruitment and retention bonuses for the workforce that serves individuals with intellectual and developmental disabilities, mental health conditions, and substance use disorder.
- Certification and training programs for certified recovery support practitioners, staff working in the community to support individuals with intellectual and developmental disabilities, and certified community health workers in apprenticeships.

- Funding for universities, community colleges and other key partners to hire multi-lingual instructors and to translate training programs, certifications and curriculums into languages that correspond with New Jersey's prominent and growing immigrant communities. This will help new workers in our economy who are seeking home and community-based care sector jobs such as certified home health aides.

And finally, this funding includes more than \$13 million to develop housing options for individuals residing in nursing facilities and institutional settings who could be supported in the community and wish to transition to less restrictive settings. This initiative will be primarily focused on individuals under the age of 65 with mental illness and/or intellectual and developmental disabilities.

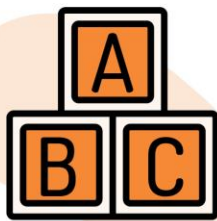
---

## **Critical Wage Enhancements**

---



## Critical Wage Enhancements



Child Care Workers



Certified nurse aides



Private duty nurses



Direct Support Professionals



Behavioral health and substance use providers

---

Governor Murphy's budget builds upon years of investments for the care sector workforce with nearly \$172 million in new state and federal funding for wage increases.

- Direct support professionals, or DSPs: More than \$83 million in state and federal funding for another DSP and supervisor wage increase.
  - Child care workers: \$12.8 million to help child care providers keep pace with the increasing minimum wage.
  - Certified nurse aides: \$30 million in state and federal funding to raise wages for these workers who provide the majority of the direct care in most nursing facilities.
  - Private duty nurses: Increasing the Medicaid reimbursement rate for private duty nurses to \$62 per hour when provided by a registered nurse and \$50 per hour when provided by a licensed practical nurse.
-

- Behavioral health and substance use providers: Nearly \$37 million in state and federal funding to support community providers of behavioral health services.

---

## Affordability for Older Adults



---

### Making N.J. More Affordable for Older Adults



---

Along with expanding the Senior Freeze property tax relief program, the budget provides more than \$1.4 million to increase income limits by another \$10,000 under the Pharmaceutical for the Aged and Disabled, or [PAAD](#), and [Senior Gold](#) prescription assistance programs that help eligible seniors and individuals with disabilities save money on prescription drug costs.

---



Both programs are managed by the [Division of Aging Services](#).

This builds on a \$10,000 income limit increase that took effect in [January 2022](#).

The budget also provides an additional \$7.1 million to enhance funding for [Jersey Assistance for Community Caregiving](#) and the [Statewide Respite Care Program](#) to increase the rates paid to case managers and expand the number of weekly home health hours available to enrolled individuals.

Following the recommendations of the [NJ Caregiver Task Force](#), the budget includes funding for the creation of a Caregiver Hub - a website that will help unpaid caregiver better navigate resources.

And to reinforce our continued commitment to advancing age-friendly practices throughout New Jersey, this budget also includes funding for community grants to support local efforts to make New Jersey an Age-Friendly State.

The budget also invests an additional \$1.2 million to hire additional staff to support the [Office of the Public Guardian](#), which works to ensure vulnerable older adults are protected from abuse, neglect and financial exploitation.

---

# NJ Save

**NJ Save is the one-stop online application for older New Jerseyans and individuals with disabilities to access benefits and savings!**



---

**Mental Health Care**

---



## Mental Health Care

Rate increase for community providers  
of behavioral health services

More community placements and  
housing subsidies for individuals

Bolstering psychiatric workforce with  
focus on children and adolescents

Expanding ARRIVE Together statewide

Strengthening and expanding mental health services continues to be a top priority of the Murphy Administration. Along with the rate increase for community providers, the budget includes the following investments in the [Division of Mental Health and Addiction Services](#):

- \$3.5 million to create 150 community placements or housing subsidies for individuals with mental illness.
- Continued funding for the psychiatric residency program, with additional investments to support child and adolescent psychiatry fellows.
- In partnership with the Attorney General's Office, expanding the [ARRIVE Together](#) program statewide.

**988 Suicide & Crisis Lifeline**  
9-8-8

**NJMentalHealthCares Helpline**  
1-866-202-HELP

**ACCESS American Sign Language and  
Videophone Helpline**  
973-870-0677

**Assistance and Referrals to Addiction Treatment**  
1-844-ReachNJ



---

**Building Upon the Launch of 988**

---



The budget also continues funding for the [988 Suicide and Crisis Lifeline](#) and the development of mobile outreach.

988 will help expand access to critical mental health services and individuals in distress are connected with the most adequate assistance.

---

## Continued Child Care Support

---



# Child Care

Waiving copayments for families

---

Continuing to pay providers  
based on enrollment

---

Making supplemental payment  
permanent

---

Grow NJ Kids training and technical  
assistance for school districts

A thriving [child care](#) system means more jobs, inclusive economic growth, stronger futures for our children and vital support for working families.

The budget invests \$112 million more to make child care more affordable for families and to support our always vital providers.

Under this investment, the [Division of Family Development](#) will continue to waive copayments for families and to pay providers based on enrollment, rather than attendance.

Since March 2020, child care providers have received an additional monthly supplemental payment of \$300 to ensure they're able to continue to provide this service so important to working families. The budget makes the \$300 supplemental payment a permanent part of the

---

child care assistance rate.

The plan also includes an additional \$400,000 for training and technical assistance for school districts who enroll in the Grow NJ Kids program, which supports quality child care and early learning.



**NEED HELP WITH  
CHILD CARE?**

New Jersey's child care assistance program helps eligible families pay for child care costs, find available child care options and more.

Visit **[www.childcarenj.gov](http://www.childcarenj.gov)** to learn more.

---

**Cover All Kids**

---



# Continuing investment in Cover **All Kids**



**NJ FAMILY CARE**



---

The budget includes nearly \$14 million in new funding to continue the ongoing vital investments in the [Cover All Kids](#) program.

As of January 1, as we've been highlighting, children under the age of 19 whose families meet income eligibility requirements are now able to obtain [NJ FamilyCare](#) coverage regardless of their immigration status.

Every child should have access to health care, and by helping more children get NJ FamilyCare coverage regardless of their immigration status, we are further making New Jersey a more affordable place to live for everyone.

---



Since the launch of Cover All Kids in 2021, more than 55,000 New Jersey children who were eligible but not enrolled are now insured through NJ FamilyCare.



**NJ FAMILY CARE** | **Cover All Kids**

# NJ Covers All Kids!

All children can apply for NJ FamilyCare,  
**regardless of their immigration status.**



---

## Investing in Food Assistance

---



## Food Assistance



- Continues state investments to ensure all SNAP household receive at least \$95 per month
- Expanding SNAP navigator program
- SNAP Navigators provide application assistance and help enrollees maintain their benefits

The budget continues the state investments of more than \$30 million to ensure that all [SNAP](#) households in New Jersey receive at least \$95 in monthly SNAP benefits, making New Jersey a leader in expanding resources for food security after the expiration of federally funded COVID-era benefits.

The budget provides \$1 million in state and federal funding to further expand the [SNAP navigator](#) program.

This will be used to hire staff who can provide training and support to community organizations interested in becoming SNAP navigators, while also supporting outreach efforts.

SNAP navigators provide application assistance and help enrollees complete and maintain their benefits.



## Get help buying groceries.

SNAP is New Jersey's food assistance program that can help families buy groceries.

All eligible households will receive at least \$95 in monthly benefits.

Visit [njsnap.gov](https://njsnap.gov)



---

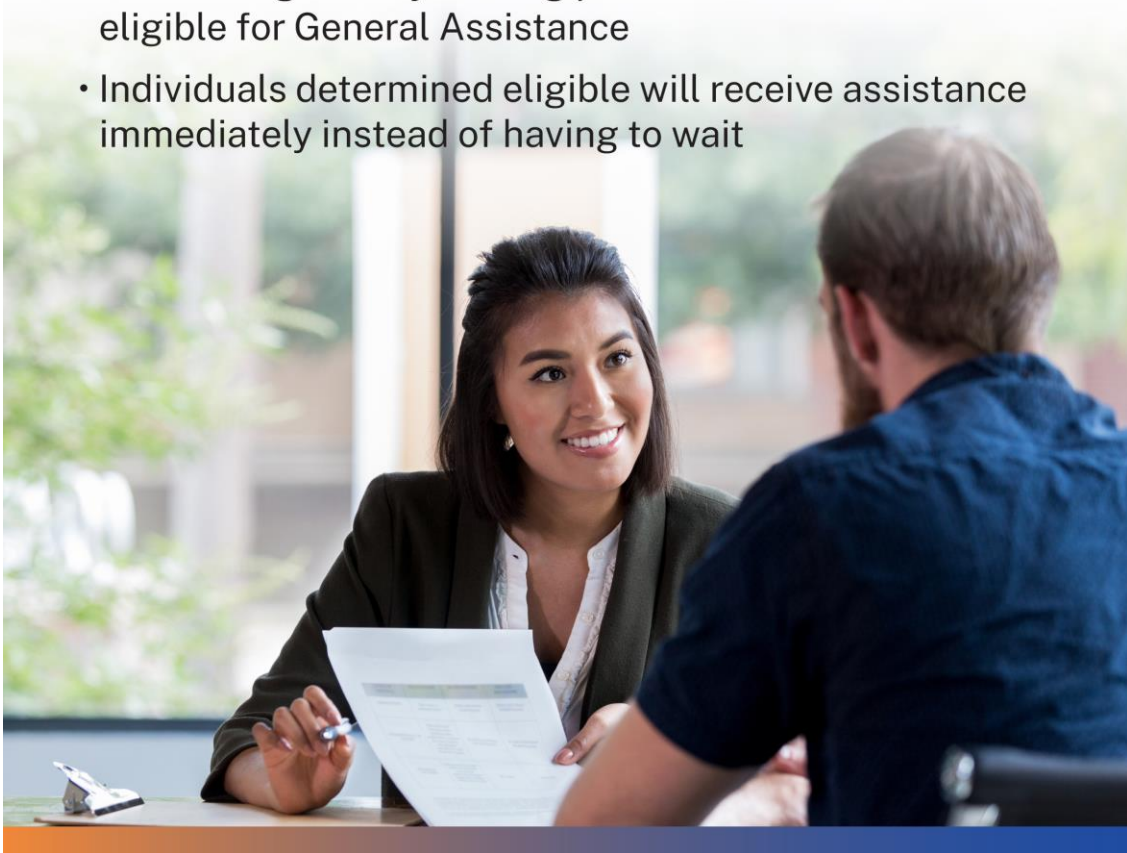
## Immediate General Assistance for Eligible Individuals

---



## General Assistance

- Eliminating 28-day waiting period for individuals eligible for General Assistance
- Individuals determined eligible will receive assistance immediately instead of having to wait



The budget eliminates the 28-day waiting period for individuals eligible for the [General Assistance](#) program.

This program provides cash assistance, emergency housing assistance benefits and burial assistance, and this waiting period has made it difficult for individuals to get assistance when they need it most.

Under the budget, individuals who are determined eligible would receive their cash assistance immediately instead of having to wait.

---



**Food Assistance**



**Cash Assistance**



**Health Insurance**

See if you are eligible at **NJHelps.org**



---

## Supporting Individuals with Disabilities

### *Blind and Visually Impaired*

Requests for Braille books for students who are blind or visually impaired continues to increase. The budget includes \$375,000 to fund these Braille book translations through the [Commission for the Blind and Visually Impaired](#).

The budget also includes \$213,000 to tackle an important issue - strengthening recruitment efforts for Teachers of the Visually Impaired.

---

### ***Deaf and Hard of Hearing***

The budget includes \$200,000 to increase funding for the [Hearing Aid Assistance for the Aged and Disabled](#) program under the [Division of the Deaf and Hard of Hearing](#).

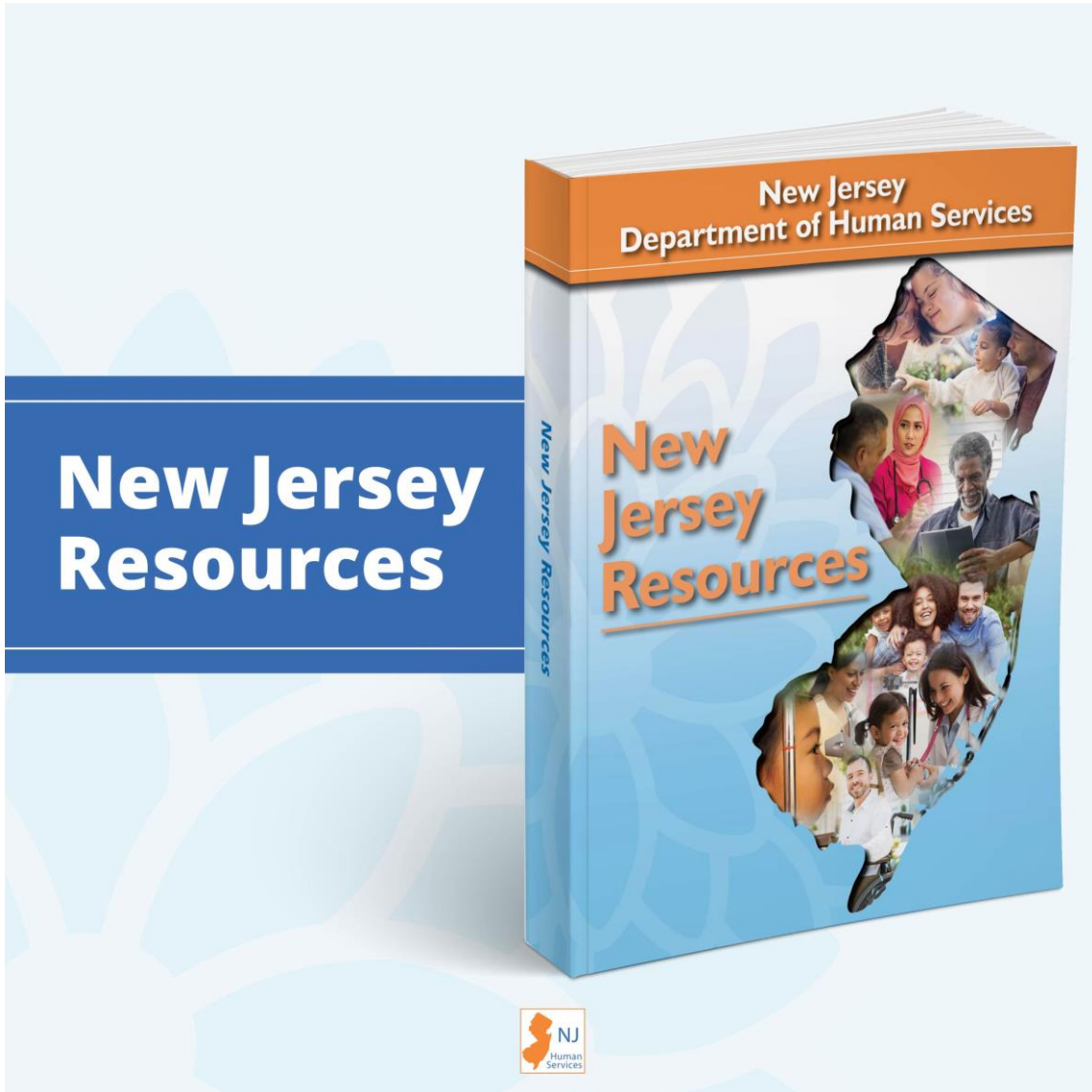
This program provides a reimbursement of up to \$1,000 for the purchase of hearing aids for older adults. With hearing aids now being more accessible over-the-counter, this funding will help ensure more of our residents have access to this critical assistance that will enhance communication and a healthier life.

### ***Disability Services***

In recent years, the [Division of Disability Services](#), through a partnership with [Rutgers' Bloustein School for Planning and Public Policy](#), has funded organizations and local governments to promote inclusive practices that support the health and well-being of individuals with disabilities where they live.

The budget includes about \$400,000 to expand the [Inclusive Healthy Communities Grant Program](#) to fund additional grantees.

---



---

**Serving Individuals with Intellectual and  
Developmental Disabilities**

---



## Helping Individuals with I/DD



Support broker  
service rate  
increase



Provider rate  
increase to account  
for inflation



Improved  
emergency group  
home services



Regional response teams  
to address behavioral  
health crises



Increased Office of  
Program Integrity and  
Accountability staffing

---

Human Services remains steadfast in its commitment to caring for individuals with intellectual and developmental disabilities.

Payment rates for providers serving clients in the community do not automatically increase for inflation, so the budget plan includes \$72 million in state and federal funding for an increase across the board for all fee-for-service provider rates to partially offset the impact of inflation.

Human Services has prioritized the unique needs of individuals with I/DD and complex behavioral challenges, especially through the funding of new residential behavioral stabilization homes for individuals with acute needs. To build on these efforts, the budget calls for \$3.2 million to establish regional response teams to address behavioral health crises in individuals with I/DD and will also train state and provider staff and develop resources.

---



Additionally, to build out more capacity for adults with I/DD in need of emergency placements, the budget includes more than \$5 million in state and federal funding for restructuring contracted emergency capacity beds to better align with the level-of-care required by many individuals who need this service.

Support brokers are a crucial part of the community-based provider network. They provide skills training and support to individuals and families that self-direct their services. To reflect these important responsibilities, and to improve the experience of individuals who self-direct, the budget includes \$250,000 in state and federal funding for a support brokerage rate increase.

The health and safety of individuals with intellectual and developmental disabilities is always a top priority, and the Office of Program Integrity and Accountability is tasked with critical functions that ensure the safety of clients being served in the community. To accommodate the needs of the growing community population, the budget includes \$600,000 to bring on more OPIA specialists and coordinators.

---



## DIVISION OF DEVELOPMENTAL DISABILITIES

Human Services' Division of Developmental Disabilities helps New Jersey adults with intellectual and developmental disabilities live more independently.

---

## Housing Assistance for Vulnerable Populations

---



# Housing Assistance

Adjusting housing subsidies to individuals with developmental disabilities, mental illness and/or substance use disorder to reflect fair market rental rates

Ensures amounts are sufficient for individuals to continue access to housing

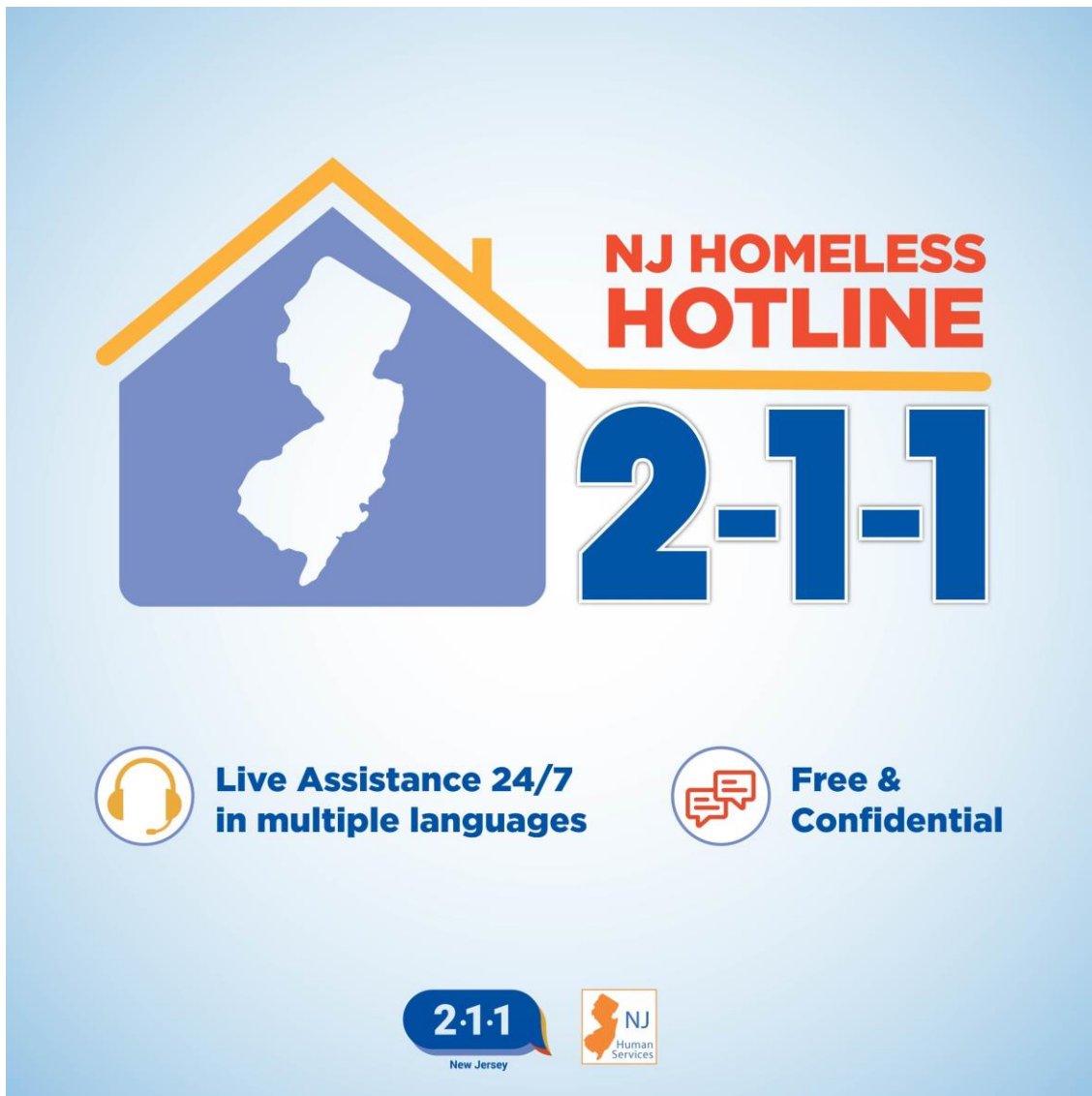
Human Services provides housing subsidies to individuals with developmental disabilities, mental illness and/or substance use disorder, and provides emergency assistance for individuals facing or at risk of homelessness.

The budget includes \$12 million to increase these rates to reflect fair market rent increases, ensuring that rental amounts are sufficient to ensure continued access to housing for individuals.

These fair market rent increases will include programs within the [Division of Mental Health & Addiction Services](#), [Division of Developmental Disabilities](#), and [Division of Family Development](#).

For DMHAS and DFD, funding will be used to increase housing assistance and vouchers that directly fund rental payments.

For DDD, this includes \$5 million to fund a 10 percent increase in the housing component of the rates paid to group home providers. This will be the first increase in the housing component of DDD provider rates in 10 years.



---

## Medicaid

---



Addressing youth mental health, maternal health, housing supports, behavioral health supports and case management

Continues investments to support quality improvements at nursing facilities

Under the budget, the [Division of Medical Assistance and Health Services](#), which oversees [NJ FamilyCare](#), will continue working with the federal government on our 1115 waiver renewal, which is focused on innovative strategies to address the Governor's and our shared priority to improve and enhance youth mental health, maternal health care, housing supports, behavioral health supports and case management. The budget includes \$54.3 million in state and federal funding for this important work.

The budget also continues its \$50 million investment in the Quality Incentive Payment Program designed to drive and support quality improvements in nursing facilities.

---



---

## Welcoming New Americans

---



Welcoming new Americans continues to be a top priority.

So the budget includes funding to continue building the [Office of New Americans](#) and continues critical investments of about \$10 million for legal services for vulnerable immigrants including unaccompanied minors.

[NJ SNAP](#) | [NJ FAMILYCARE](#) | [NJHELPS](#)

FOLLOW US!

